

Symphony™ SDM

Software Delivery Manager

Product Features

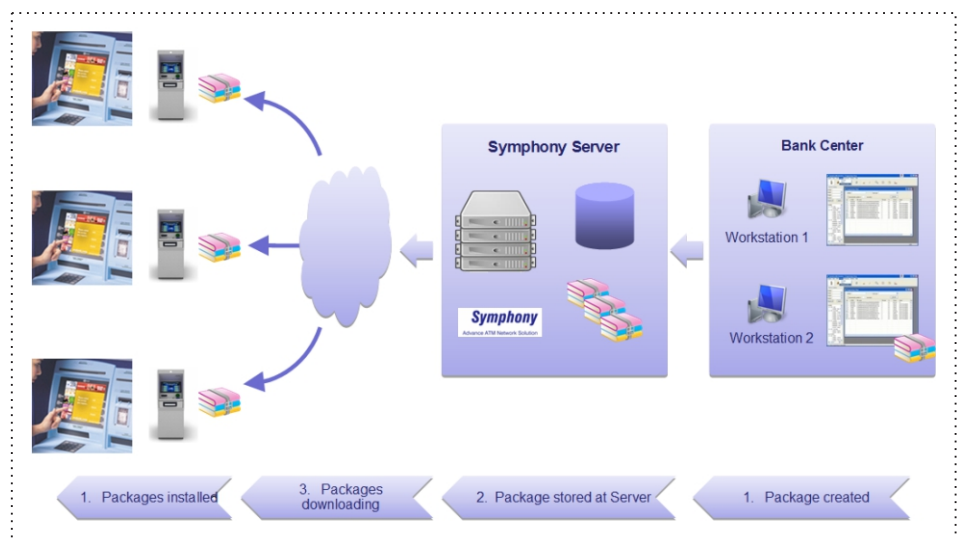
- ❖ Supports multiple ATM connections
- ❖ Handles multiple processes
- ❖ Ad-hoc or scheduled updates
- ❖ Updates package creator
- ❖ Updates process monitoring/resume
- ❖ Single or batch update process
- ❖ Supports different file types
- ❖ User Access Management
- ❖ ATM management by branches/zones
- ❖ Task management
- ❖ Audits, tracks and traces
- ❖ Client/server architecture
- ❖ Creates and manages installation packages
- ❖ Scheduled downloads, install packages
- ❖ Monitors downloads and install tasks
- ❖ Stops running tasks
- ❖ Packages data checksum upon completion of downloads
- ❖ View history of downloads and installation
- ❖ Scripting for installed processes
- ❖ Restarts ATM manually or on scheduled time
- ❖ Rollback to older version

Symphony SDM (Software Delivery Manager) is an advanced ATM software application that helps banks centralise, manage, synchronise and personalise their software updates for all ATMs in their network. Symphony SDM uses its own data transfer protocol to minimize data transfer time, track and monitor all downloads, and check installed processes. In case there is a download failure due to lost of communications or ATM down, downloads will resume from the point of failure.

With an optimal compression algorithm, Symphony SDM can deliver updates to ATMs completely intact, even if it is an update screen, a fix or a new function.

Benefits

- ❖ Creates, monitor and manage installation tasks
- ❖ Scheduled downloads
- ❖ Stops ongoing task
- ❖ Check sum for data packages while downloading
- ❖ View history of download and installation
- ❖ Scripting capability for installation process
- ❖ Restarts ATM manually or scheduled
- ❖ Option to rollback to older version if necessary



Minimum System Requirement

SDM Servers

- Intel Pentium III, 1GHz Processor
- 512MB RAM
- 20 GB hard drive
- Microsoft Windows
- Advance Server 2000
- Microsoft SQL Server 2000

SDM Workstations

- Intel Pentium III, 733MHz Processor
- 256MB RAM
- 10 GB hard drive
- Microsoft Windows NT Workstation/XP

SDM Agent

- Intel Pentium III, 433MHz Processor
- 128MB RAM
- 10GB hard drive
- Microsoft Windows NT Workstation/XP

ATM Support and Compatibility

ATM Terminals

- NCR terminals
- Diebold terminals
- Wincor terminals
- Any XFS compliant terminals

Third party software application

- McAfee Solidcore

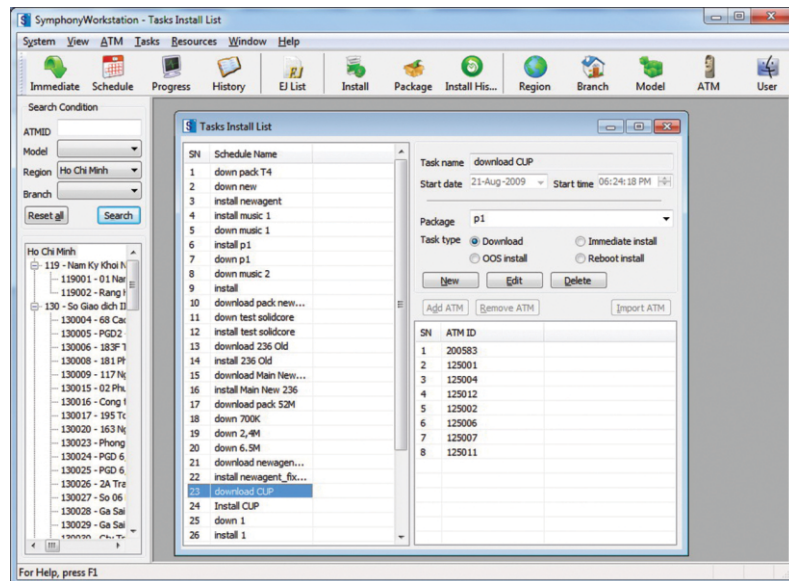
Security

For security, DES is applied to encrypt and decrypt the update data, while MAC is used for checking completion of data from ATM to SDM Server. This is an optional and configurable feature.

Scheduling

Symphony SDM is designed with scheduling capability. Banks can configure the system to send the update to each ATM in a preset time, utilising the idle time of the network, thereby saving the bandwidth for high transaction periods. Tasks can be carried out during the night, when the load on the network is at a minimum.

The schedule can also be set for ATMs based on branches and zones, which is especially effective for regional-based advertisements. With the implementation of Symphony SDM, banks will have the assurance to effectively and efficiently manage all their updates for their ATM network.



Symphony Software Ltd.,

Registered Office: 17/F Beautiful Group Tower, 77 Connaught Road, Central, Hong Kong
Tel: +852 3583 3340 - www.symppsoft.com

Technical Support: Tel: +84-4 22205583 - Email: Support@symppsoft.com

International Sales: Tel: +84-4 39362428 - Email: Sales@symppsoft.com

Symphony SDM and other are registered trademarks of Symphony Software Ltd

All other trademarks, service marks and company names mentioned in this document are properties of their respective owners.

© Symphony Software Ltd May 2012. All Rights Reserved.